

Flagship Retail Dubai Mall



FLAGSHIP RETAIL DUBAI MALL

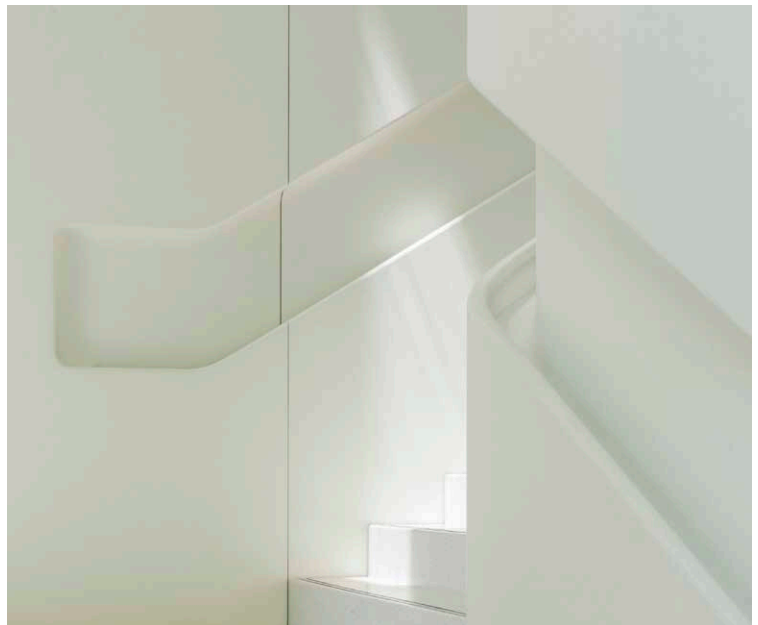
This branded environment spans two levels and an exterior terrace overlooking the famed fountains at the Dubai Mall. Our polished glass fiber reinforced concrete (Polished GFRC) panels clad the interior walls and soffits, storefronts, staircases with integrated handrails, curved door cladding and exterior panels. We integrated stainless steel trim components with the logo assembly for seamless unique conditions.

ARCHITECT: Foster + Partners

LOCATION: Dubai, UAE

MATERIALS: Tactile Polished GFRC Cladding™

PRODUCTS: Tactile Cladding™



Phone: +1.888.219.2126

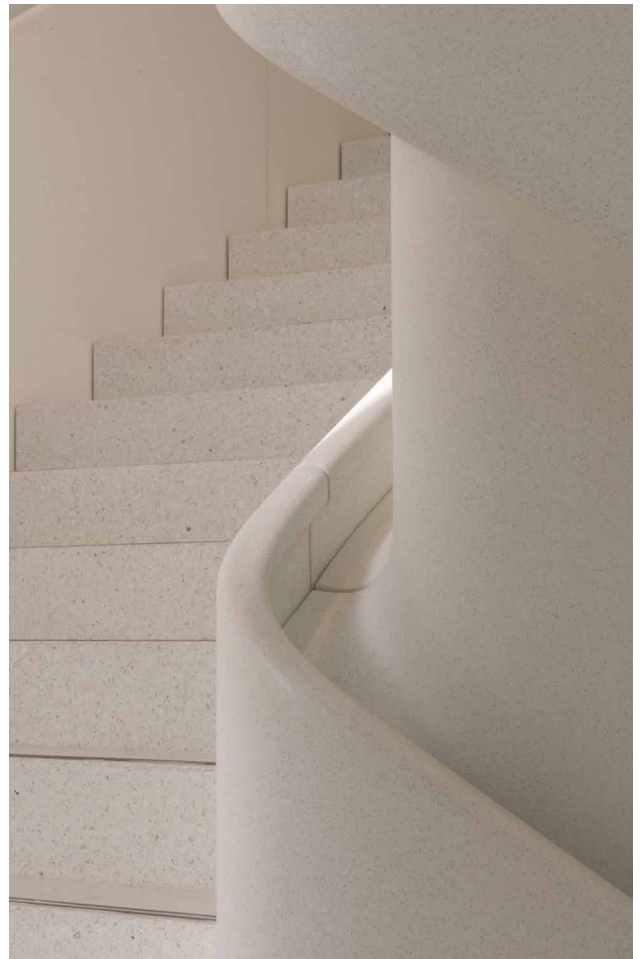
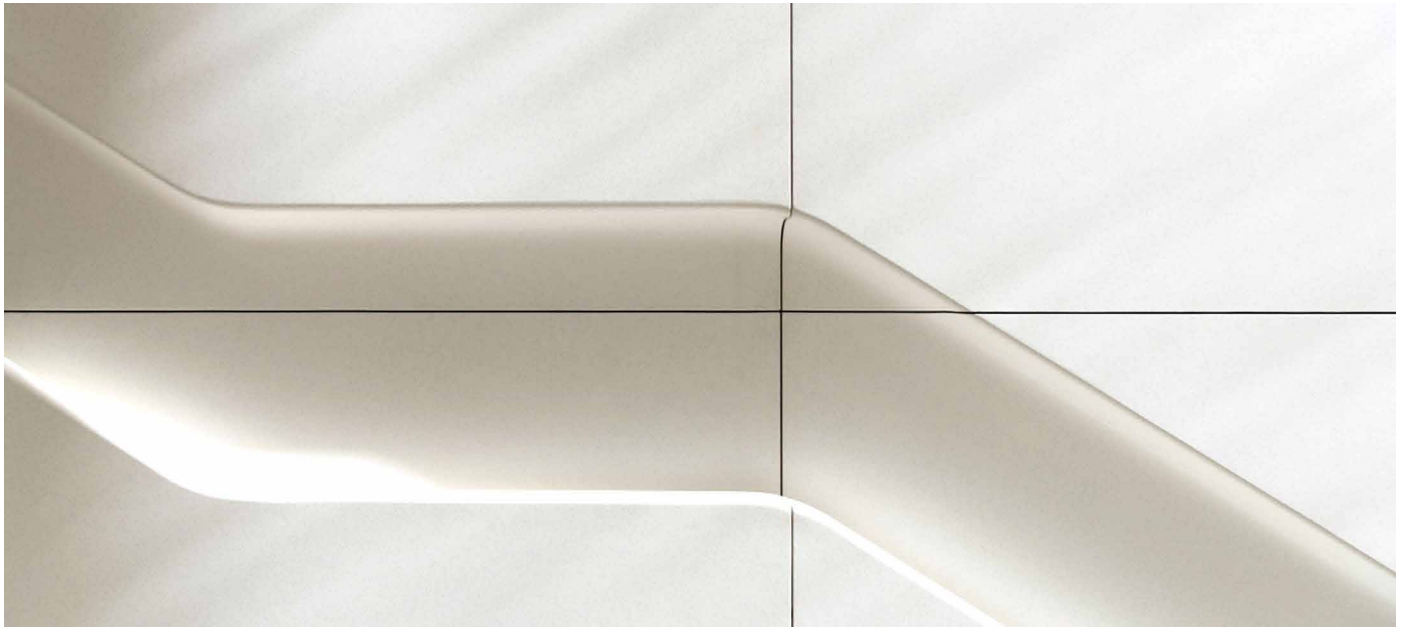
Email: info@architecturalmaterials.com

Copyright Architectural Materials. All rights reserved.

[Contact a product manager for more information.](#)

Version 10.20.1000.30 | TE-PGFRC-PR1

Flagship Retail Dubai Mall



Branded Retail Qingdao



BRANDED RETAIL QINGDAO

Part of an expansion of branded retail environments throughout China this three level store features unique material applications. With integrated glass stair connections, handrails, structural glass wall and floor among the unique conditions. This great hall has a volumetric space that is nominally 30' tall. Oversized Tactile Polished GFRC™ panels have been fabricated up 1.8 meters (6'0") wide X 7.3 meters (24'0") tall.

ARCHITECT: Foster + Partners

LOCATION: Qingdao, China

MATERIALS: Tactile Polished GFRC Cladding™

PRODUCTS: Tactile Cladding™



Phone: +1.888.219.2126

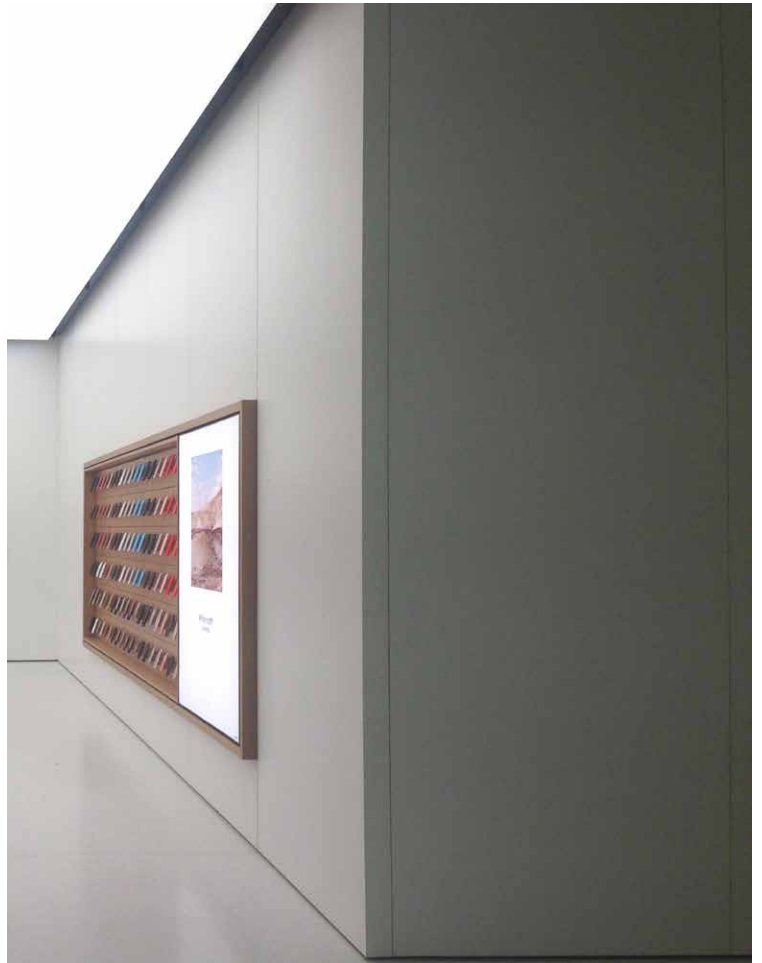
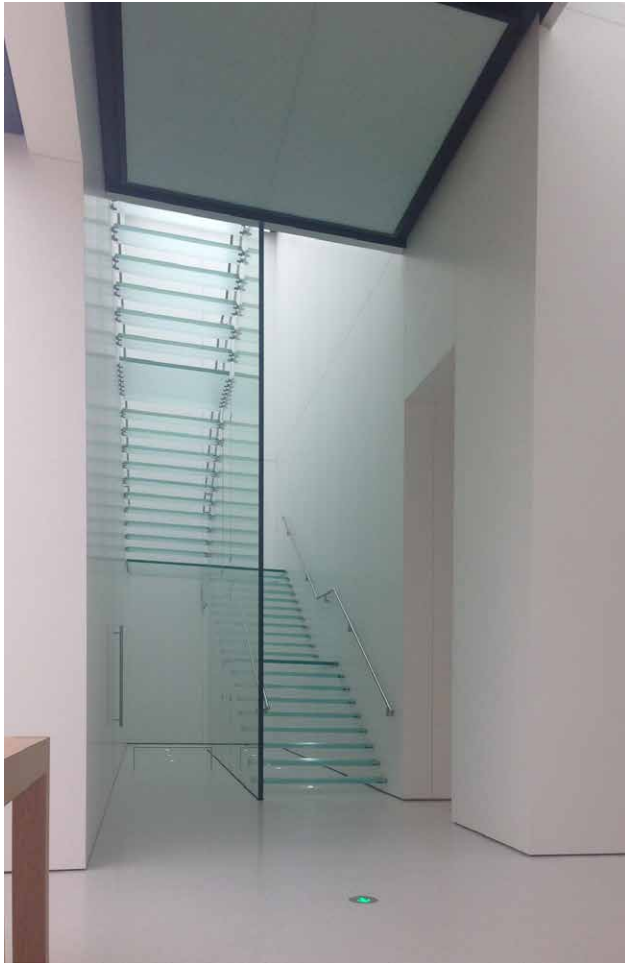
Email: info@architecturalmaterials.com

Copyright Architectural Materials. All rights reserved.

Contact a product manager for more information.

Version 10.20.1000.30 | TE-PGFR-PR3

Branded Retail Qingdao



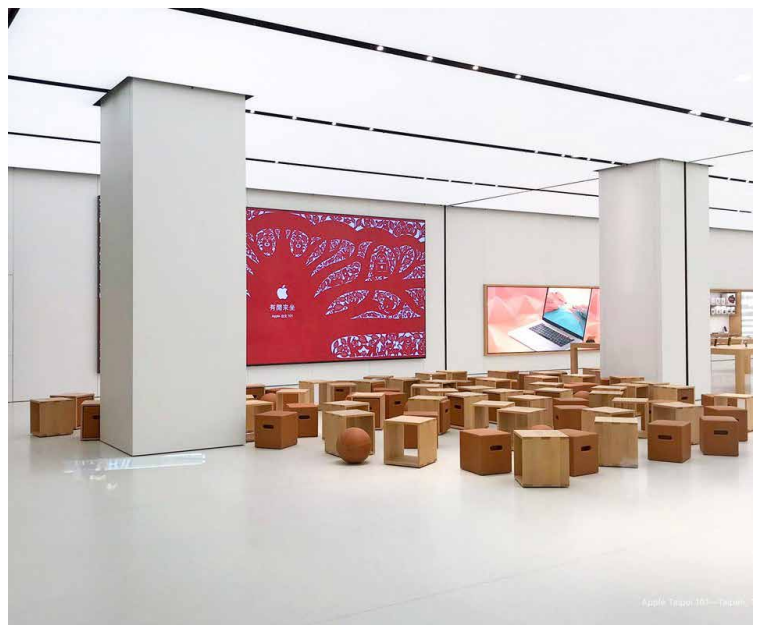
Branded Retail Taipei 101



BRANDED RETAIL TAIPEI 101

As this Taipei 101 branded retail store opened in a retail complex at the base of one of the tallest buildings in the world, crowds of customers gather in this beautifully designed space. Upon entrance you are greeted with Tactile Polished GFRC™ curved panel cladding, column covers, oversized doors, fire extinguisher covers and back of the house door cladding. Polished GFRC has also been integrated with branded logos throughout the store.

- ARCHITECT:** Foster + Partners
- LOCATION:** Taipei, Taiwan
- MATERIALS:** Tactile Polished GFRC Cladding™
- PRODUCTS:** Tactile Cladding™



Phone: +1.888.219.2126

Email: info@architecturalmaterials.com

Copyright Architectural Materials. All rights reserved.

[Contact a product manager for more information.](#)

Version 10.20.1000.30 | TE-PGFR-PR5

Branded Retail Taipei 101



Branded Retail Macau



BRANDED RETAIL MACAU

The Macau store is one of the many branded retail environments featuring Tactile Polished GFRC Cladding™. This Macau location offers a unique experience for customers entering the retail store. Greeted with curved and flat large polished GFRC cladding panels at the entrance and throughout the store including columns and large stainless steel doors clad with our Tactile Polished GFRC™.

ARCHITECT: Foster + Partners

LOCATION: Macau

MATERIALS: Tactile Polished GFRC Cladding™

PRODUCTS: Tactile Cladding™



Phone: +1.888.219.2126

Email: info@architecturalmaterials.com

Copyright Architectural Materials. All rights reserved.

Contact a product manager for more information.

Version 10.20.1000.30 | TE-PGFRC-PR7

Branded Retail Macau



Phone: +1.888.219.2126

Email: info@architecturalmaterials.com

Copyright Architectural Materials. All rights reserved.

Contact a product manager for more information.

Version 10.20.1000.30 | TE-PGFR-PR8

Branded Retail Kunming



BRANDED RETAIL KUNMING

The Kunming retail store features a dramatic cylindrical entrance with all interior walls and storefronts clad with our Tactile Polished GFRC™. The Tactile Polished GFRC™ panels are up to 2000 mm wide (78") and 4500 mm (15'0") large in size. Our material is featured within the branded retail environment including the doors for the back of the house operations, flat and curved panels as well as public furnishings.

ARCHITECT: Foster + Partners

LOCATION: Kunming, China

MATERIALS: Tactile Polished GFRC Cladding™

PRODUCTS: Tactile Cladding™



Phone: +1.888.219.2126

Email: info@architecturalmaterials.com

Copyright Architectural Materials. All rights reserved.

[Contact a product manager for more information.](#)

Version 10.20.1000.30 | TE-PGFRC-PR9