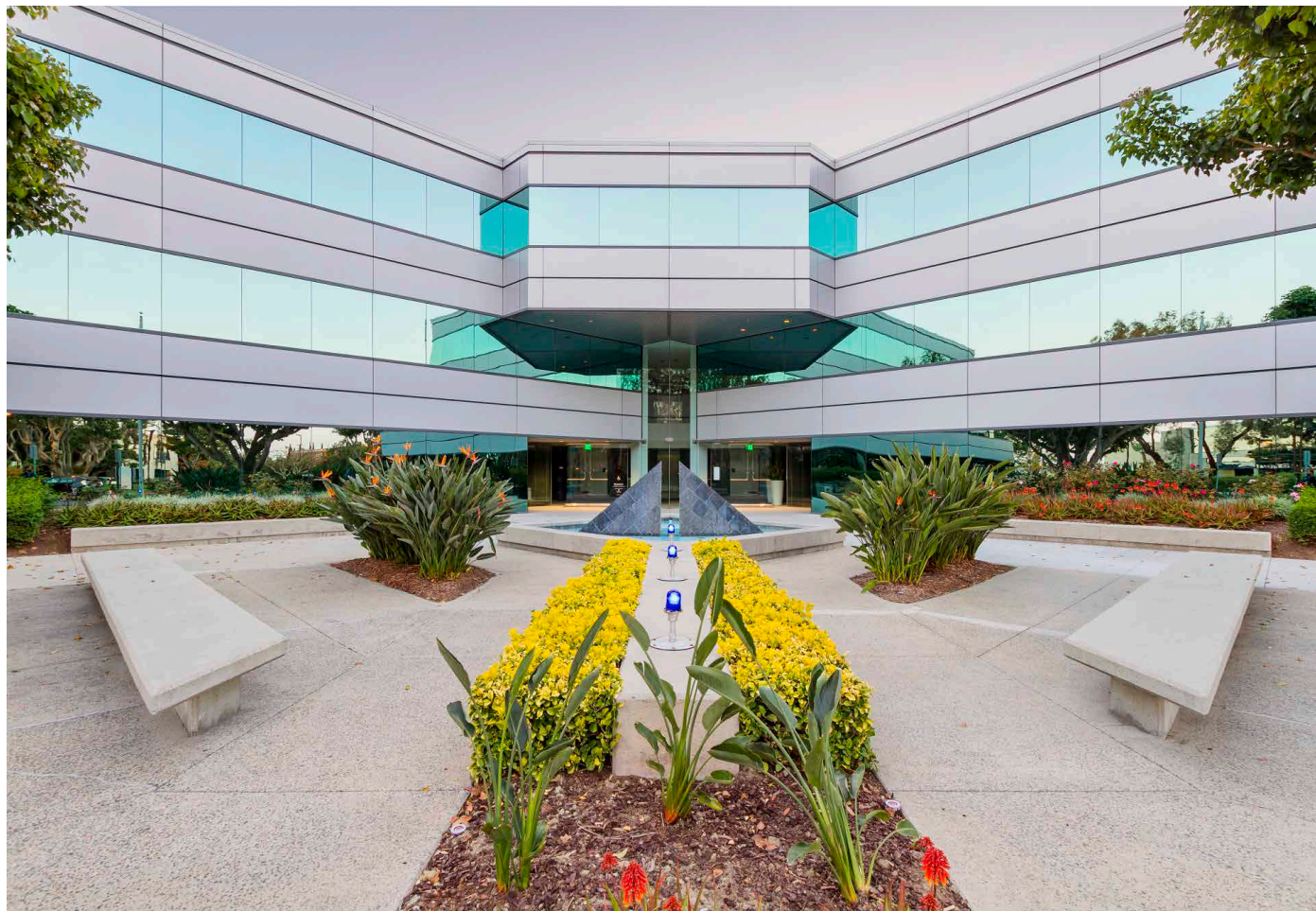


Carlsbad Airport Plaza



CARLSBAD AIRPORT PLAZA

Clean crisp lines and integrated extruded aluminum contrasting reveals with metallic silver panels compliment the architectural massing of this office building. Our innovative four-sided silicone application in combination with tension leveled 4.76 mm (3/16") aluminum resulted in super flat panels and formed sharp corners. We applied the high performance finish post-fabrication to insure consistent tonality among panels.

LOCATION: Carlsbad, California USA

MATERIALS: Tactile Formed Aluminum™

PRODUCTS: Tactile Exterior Cladding™



Phone: +1.888.219.2126

Email: info@architecturalmaterials.com

Copyright Architectural Materials. All rights reserved.

Contact a product manager for more information.

Version 10.20.1000.30 | TM-FA-PR1

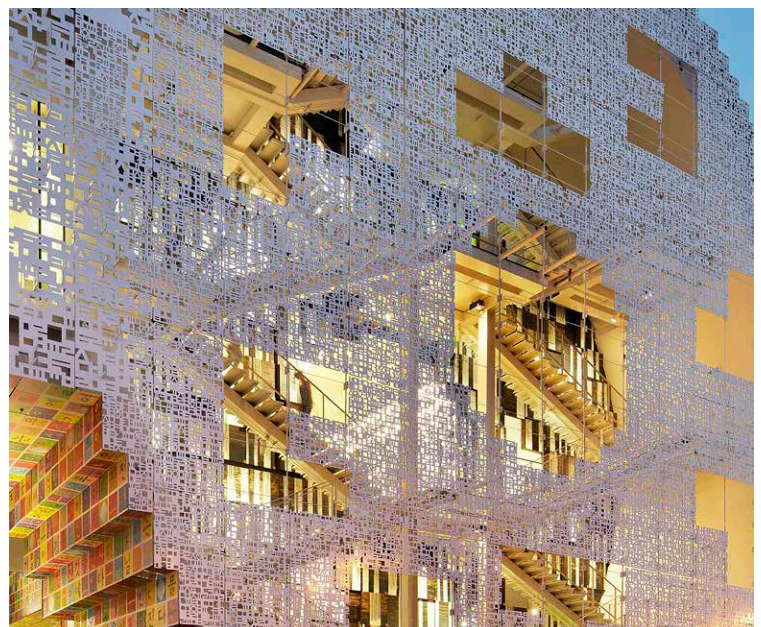
Korean Pavilion



KOREAN PAVILION

The six-story structure was created to house the “Korean Experience” within the 2010 World Exposition. The exterior features the Korean alphabet in various sizes and transparencies in a collage offset with digitally printed metal panels. A unique tension facade support system comprised of a thin net of vertical and horizontal rods reduce visual massing.

- ARCHITECT:** Mass Studies (Minsuk Cho)
CLIENT: Shanghai World Expo 2010
LOCATION: Shanghai, China
MATERIALS: Tactile Formed Aluminum™
PRODUCTS: Tactile Exterior Cladding™



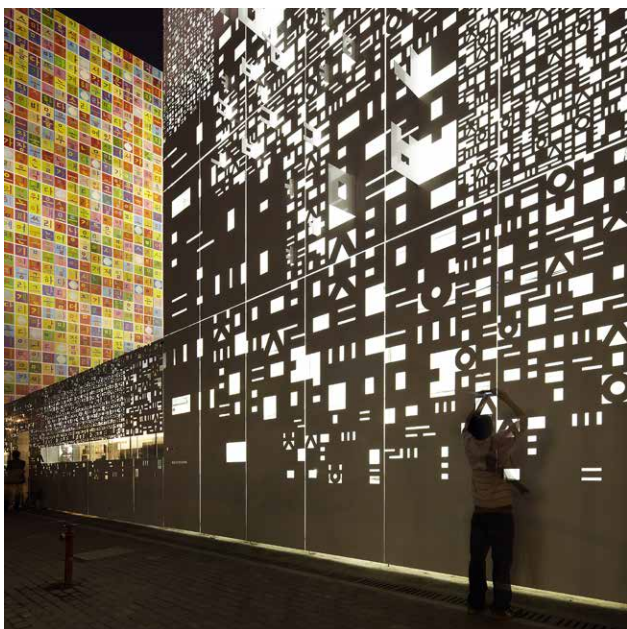
Phone: +1.888.219.2126
Email: info@architecturalmaterials.com

Copyright Architectural Materials. All rights reserved.

Contact a product manager for more information.

Version 10.20.1000.30 | TM-FA-PR2

Korean Pavilion



Phone: +1.888.219.2126

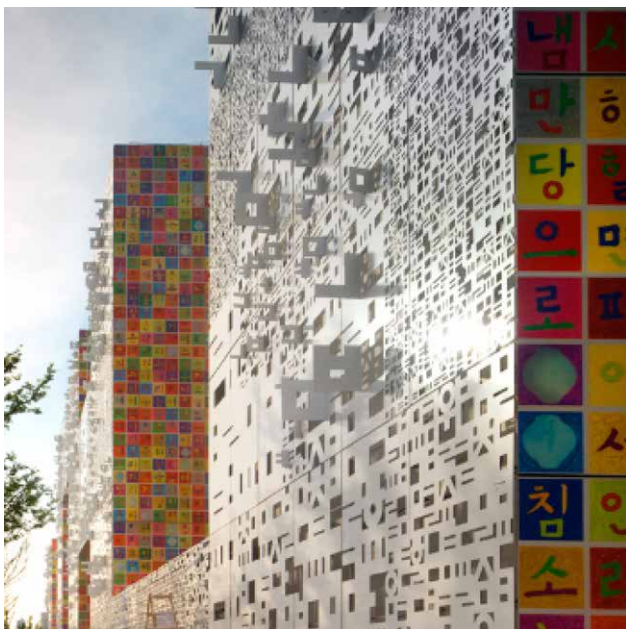
Email: info@architecturalmaterials.com

Copyright Architectural Materials. All rights reserved.

Contact a product manager for more information.

Version 10.20.1000.30 | TM-FA-PR3

Korean Pavilion



Phone: +1.888.219.2126

Email: info@architecturalmaterials.com

Copyright Architectural Materials. All rights reserved.

Contact a product manager for more information.

Version 10.20.1000.30 | TM-FA-PR4

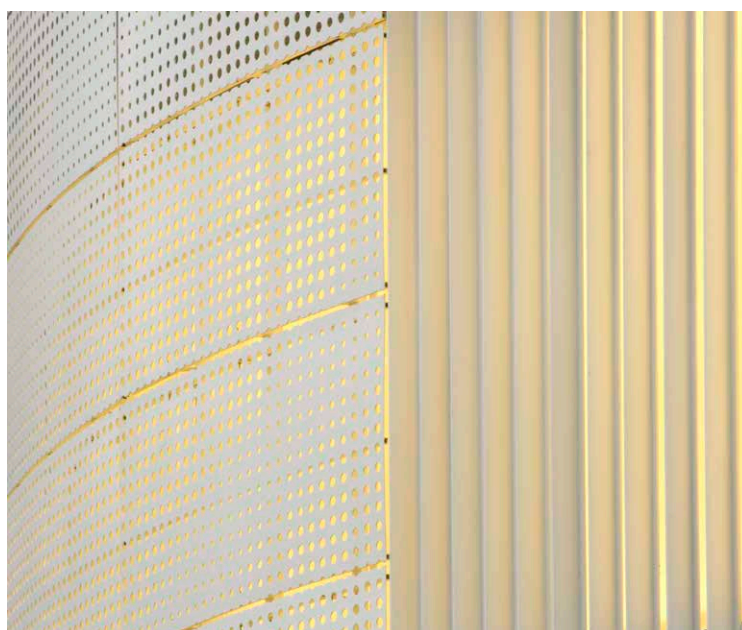
Uniqlo Flagship Store



UNIQLO FLAGSHIP STORE

The UNIQLO Flagship Store is centrally located on the most popular shopping street in Shanghai. The design team chose to enhance the façade by creating a fabric appearance across the more than 30,000 square feet of façade. The perforated plate aluminum features the application of our Tactile Ceramic Composite coating to mitigate soiling.

- ARCHITECT:** Bohlin Cywinski Jackson
CLIENT: Fast Retailing
LOCATION: Shanghai, China
MATERIALS: Tactile Formed Aluminum™
PRODUCTS: Tactile Exterior Cladding™



Phone: +1.888.219.2126

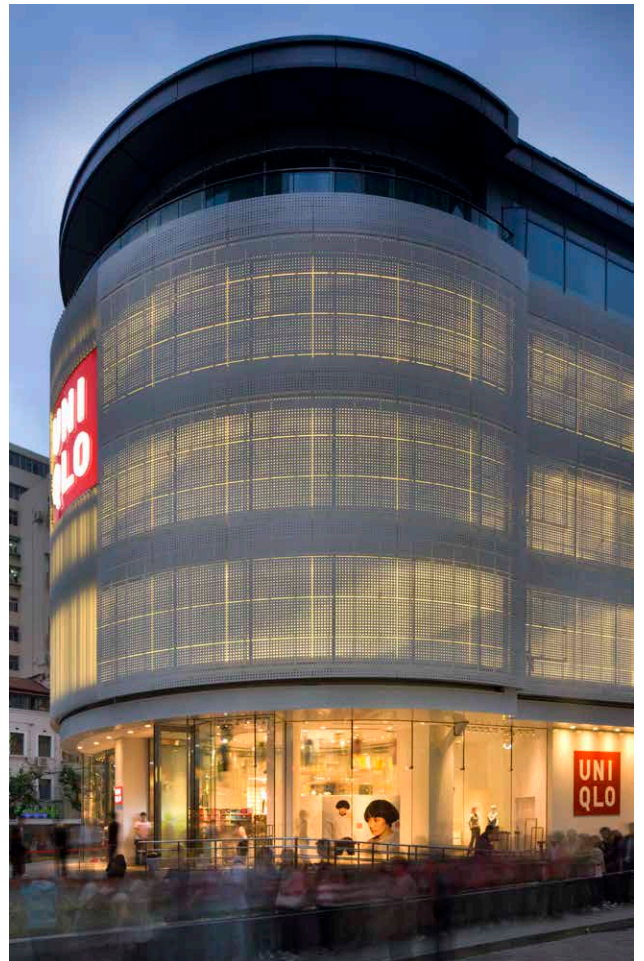
Email: info@architecturalmaterials.com

Copyright Architectural Materials. All rights reserved.

Contact a product manager for more information.

Version 10.20.1000.30 | TM-FA-PR5

Uniqlo Flagship Store



Phone: +1.888.219.2126

Email: info@architecturalmaterials.com

Copyright Architectural Materials. All rights reserved.

Contact a product manager for more information.

Version 10.20.1000.30 | TM-FA-PR6

Wellington Mews



WELLINGTON MEWS

The building features curved architectural surfaces that act as sunshades and soften the urban context of the building. We developed a method of forming the 3 mm aluminum plate cladding to integrate open rainscreen joinery and comply with the intended design aesthetic. This reduced the weight of the flying buttress features.

- ARCHITECT:** John Portman & Associates
CLIENT: Taj Hotels & Resorts
LOCATION: Mumbai, India
MATERIALS: Tactile Formed Aluminum™
PRODUCTS: Tactile Exterior Cladding™



Phone: +1.888.219.2126
Email: info@architecturalmaterials.com

Copyright Architectural Materials. All rights reserved.

[Contact a product manager for more information.](#)

Version 10.20.1000.30 | TM-FA-PR7